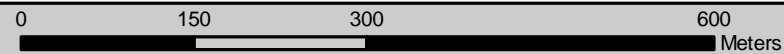


Source: Aerial Map obtained from NYS High Resolution Digital Orthoimagery Program - Suffolk County dated 2001

Prepared for:
Suffolk County
Department of Public Works

Prepared by:
Cashin Associates, P.C.
Cameron Engineering & Associates, LLP

Legend



••	Tidal Inundation Stake	■	High Marsh	■	Mix High/Low Marsh	■	Upland
X	Sampling Station	■	Low Marsh	■	Phragmites australis	■	Pond
S	Stake Label with Number	D	Cross Ditch Label with Number			□	Suffolk County Tax Map
D	Ditch Label with Number						

Suffolk County Vector Control &
Wetlands Management Long-Term Plan
and Environmental Impact Statement

Task 7 - Priority Study Areas
Gilgo Island Wetland
Amityville, New York
March 2005



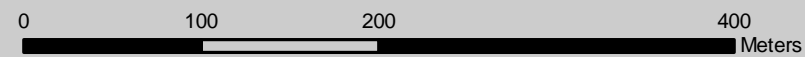
Source: Aerial Map obtained from NYS High Resolution Digital Orthoimagery Program - Suffolk County dated 2001

Prepared for:
Suffolk County
Department of Public Works

Prepared by:
Cashin Associates, P.C.
Cameron Engineering & Associates, LLP

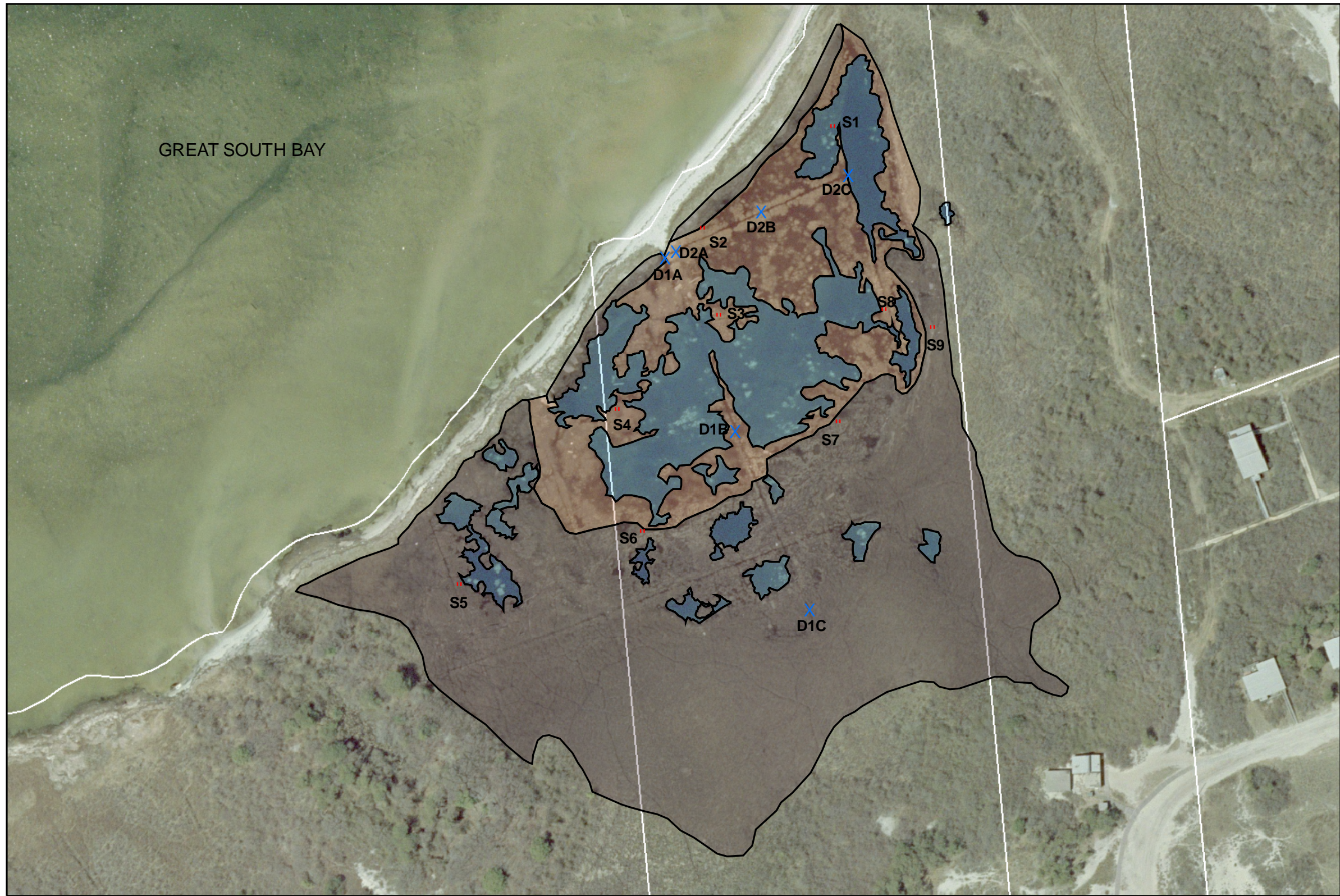
Legend

- | | | | |
|---|-------------------------|---------------------------------|------------------------|
| " | Tidal Inundation Stake | High Marsh | Phragmites australis |
| X | Sampling Station | Low Marsh | Pond |
| S | Stake Label with Number | Mix High/Low Marsh | Suffolk County Tax Map |
| D | Ditch Label with Number | D Cross Ditch Label with Number | |



Suffolk County Vector Control &
Wetlands Management Long-Term Plan
and Environmental Impact Statement

Task 7 - Priority Study Areas
Crab Meadow Wetland
Northport, New York
March 2005



Source: Aerial Map obtained from NYS High Resolution Digital Orthoimagery Program - Suffolk County dated 2001

Prepared for:
 Suffolk County
 Department of Public Works

Prepared by:
 Cashin Associates, P.C.
 Cameron Engineering & Associates, LLP

0 37.5 75 150 Meters

Legend

••	Tidal Inundation Stakes	■	Mix High/Low Marsh	□	Suffolk County Tax Map
X	Sampling Stations	■	Phragmites australis		
S	Stake Label with Number	■	Pond		
D	Ditch Label with Number		D	Cross Ditch Label with Number	

Suffolk County Vector Control &
 Wetlands Management Long-Term Plan
 and Environmental Impact Statement

Task 7 - Priority Study Areas
 West Watch Hill Wetland
 Bayberry Dunes, New York
 March 2005